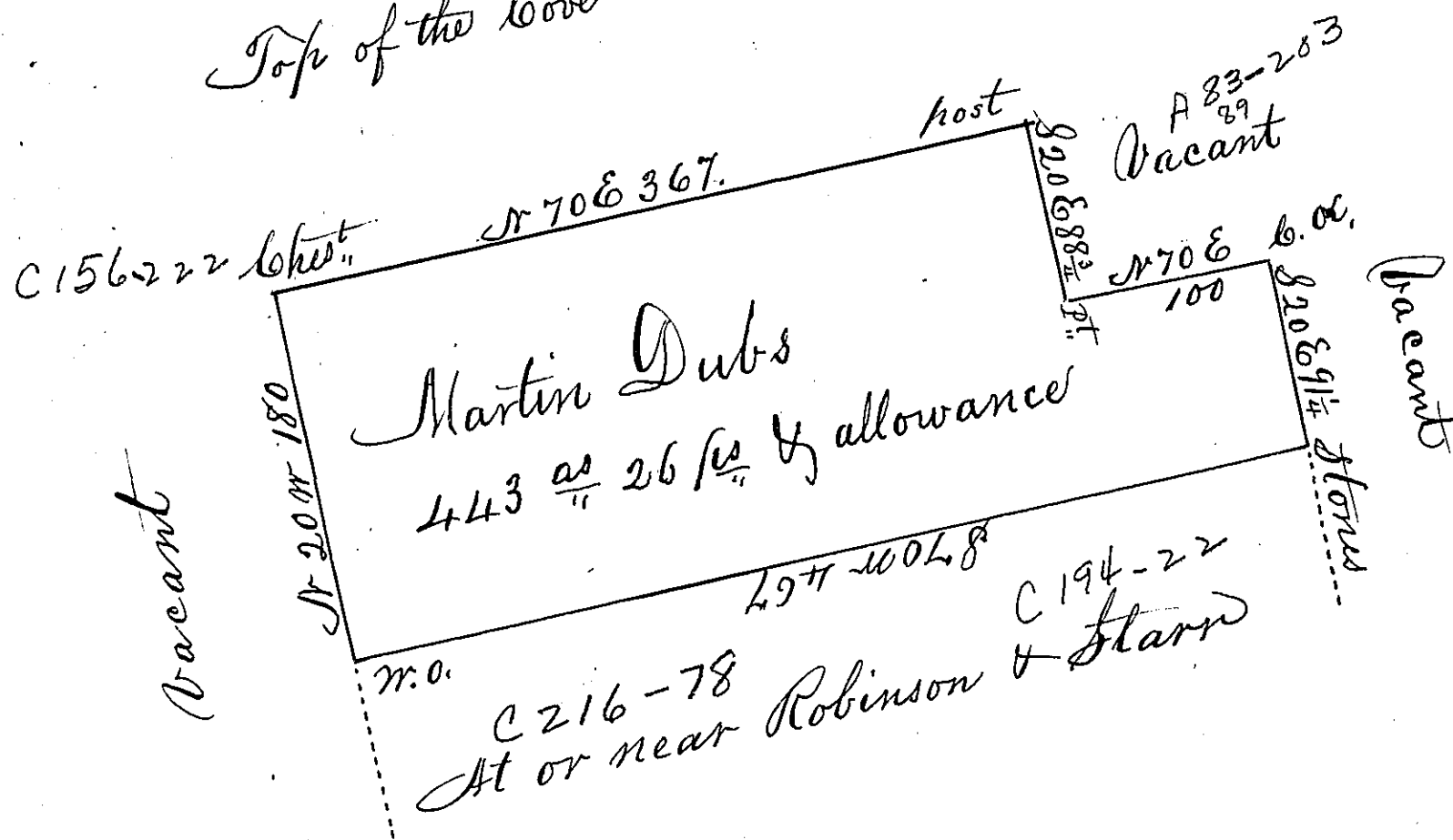


Top of the Cove Mountain



A Draught of a tract of land situate in Rye Township Cumberland County, containing 443<sup>a</sup> 26<sup>1/4</sup> allowance of Six P. Cent for Roads &c. Surveyed the 7<sup>th</sup> day of June 1797, In pursuance of a warrant granted to Martin Dubs dated the 21<sup>st</sup> day of December 1793.

I Certify that the above is a copy of a draught remaining in the Deputy Surveyors Office, Surveyed by Saml. Lyon (then) D. S. of Cumberland County - July 20<sup>th</sup> 1812.  
To Andrew Porter Esqr. S. G. Wm Wheeler D. S.

IN TESTIMONY that the above is a copy of the original remaining on file in the Department of Internal Affairs of Pennsylvania, made conformably to an Act of Assembly approved the 16th day of February, 1833, I have hereunto set my Hand and caused the Seal of said Department to be affixed at Harrisburg, this

Ninth day of August 1884.

J. Simpson Africa,  
Secretary of Internal Affairs